



BC 
ARTISTIC
SWIMMING

2022 Year End Club Meeting



LAND ACKNOWLEDGEMENT



Welcome to everyone who has joined today from across British Columbia. I acknowledge that this meeting is originating from the traditional, ancestral and unceded territory of the Katzie, Kwantlen, Matsqui, and Semiahmoo First Nations.

I am honoured and privileged to work and raise my family on this land.

Online Meeting Norms

- Mute Yourself to Prevent External Noise
- Chat Box for Questions during Presentation
- Avoid sidebar discussions
- Question Period at End

Open Mind

Participate Mindfully

Listen Generously

Express Your Need

BC ARTISTIC SWIMMING

New FINA Judging System



CANADA 
ARTISTIC
SWIMMING

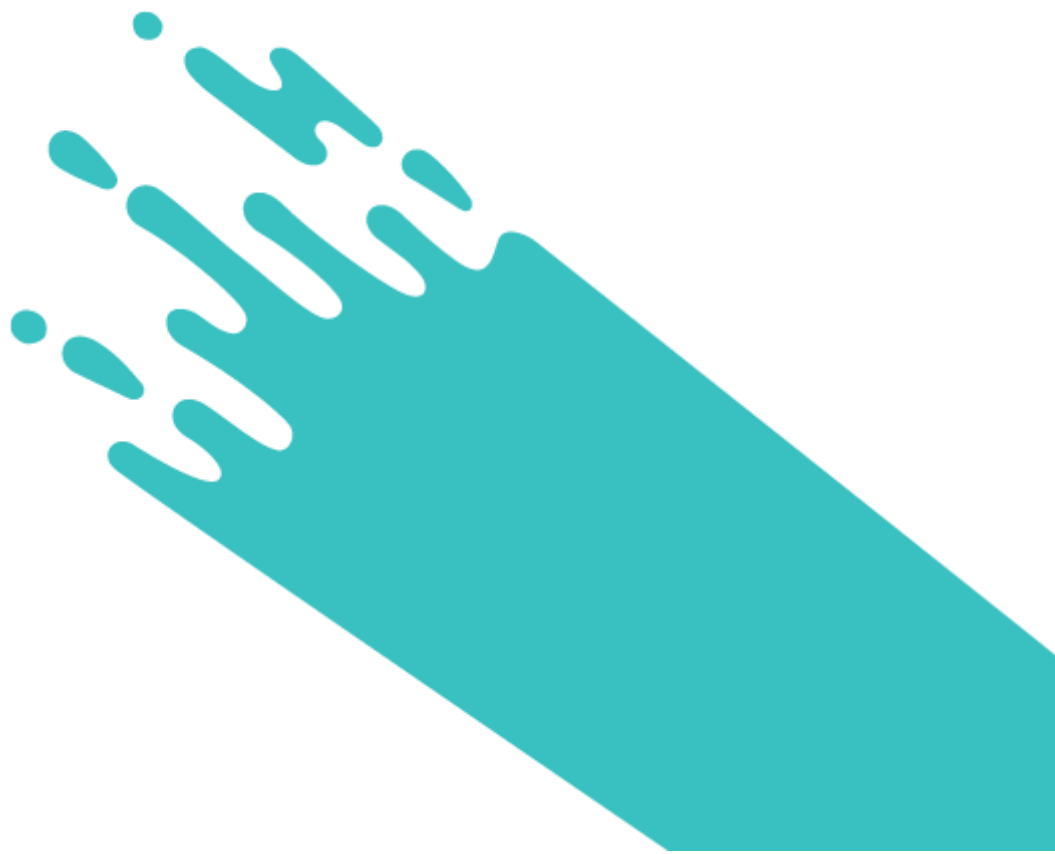


Agenda

1. CAS Presentation
2. Updates
3. FINA Learning Platform
4. CAS Coach Card
5. Where are we now?

CANADA ARTISTIC SWIMMING

**New FINA Scoring System
PTSO Update: March 1, 2022**



OBJECTIVES FOR TODAY . . .

- **Give a general update on how new system implementation is progressing – keep everyone informed**
- **Continuing open communication with PTSOs, officials and coaches – Team Canada working together!**
- **Preparing for new system implementation in Canada**



WHERE ARE WE NOW?

- **2nd draft of materials available on FINA Learning platform (Difficulty Guide, Acro Catalog), with V.3. coming soon!**
<https://learning.fina.org/coaches-officials-artisticswimming/>
- **FINA Technical Controller training starting March 2022!**
- **FINA Technical Controller Training materials being finalized (Hybrids, Acrobatics, Synchronisation) – as well as those that will help with coach education (videos and Coach Card)**
- **FINA Rules Revision is work in progress**
- **Revision of judging areas - Execution and Artistic Impression**
- **Remember all is subject to approval at FINA Congress**



GENERAL OVERVIEW

DIFFICULTY Technical Controllers	SYNCHRONISATION Technical Controllers	ELEMENTS Judges	ARTISTIC IMPRESSION Judges
(3 controllers)	(3 controllers)	(5 judges)	(5 judges)
Check and verify the declared difficulty of Hybrids and Acrobatics (as declared on Coach Card)	Duets & Teams only. Synchro Errors: Minor/small Obvious Major	Give an execution mark for <u>each hybrid</u> and <u>each acrobatic</u>	Give 3 individual marks: (1) Choreo and Music Int. (2) Manner of Pres. (3) Transitions Overall Impression

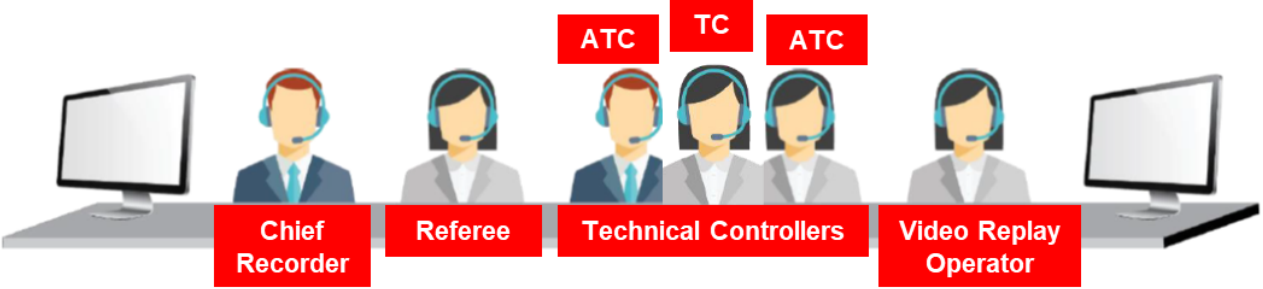
*Above is an up to date general overview - details are still under development and review

*Technical controllers = technical expertise pre-reqs + required training (judges, coaches, athletes)

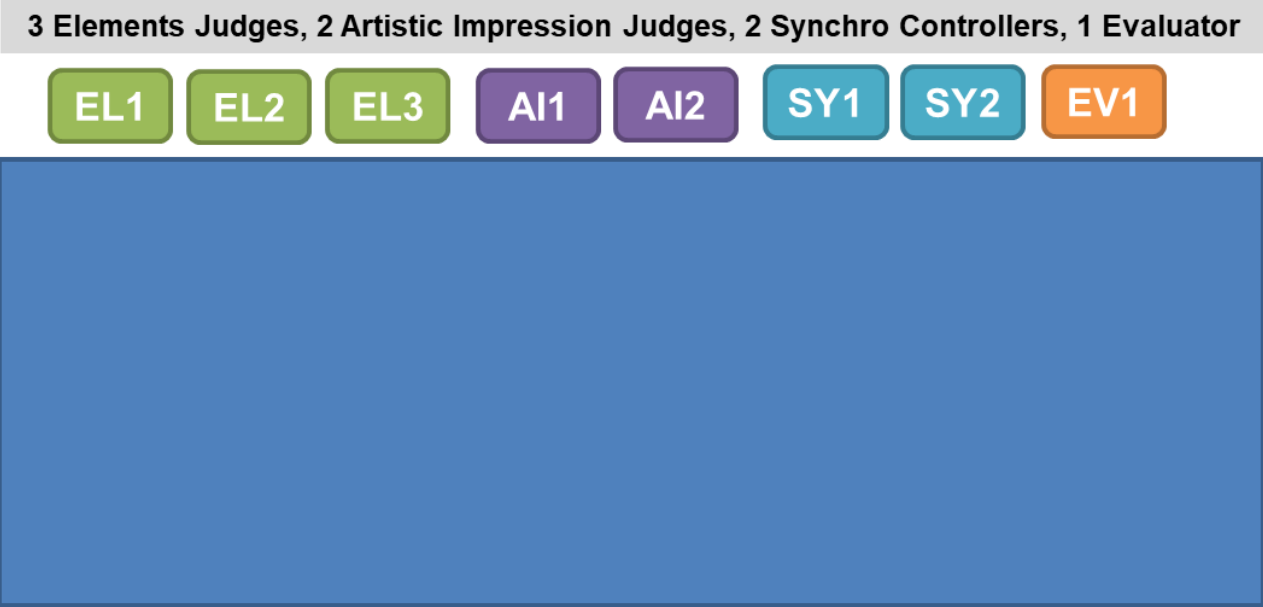


OUR NEW COMPETITION SET-UP MAY LOOKING SOMETHING LIKE THIS:

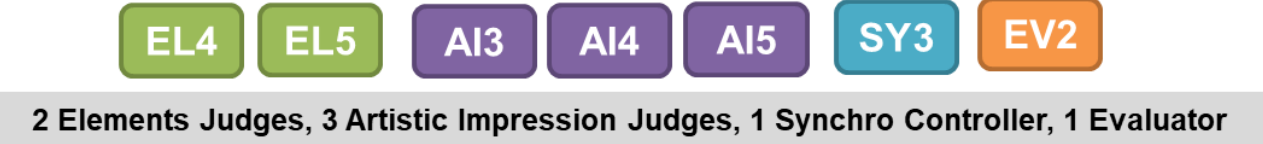
The “Technical Panel” sits above and behind judges on one side of the pool



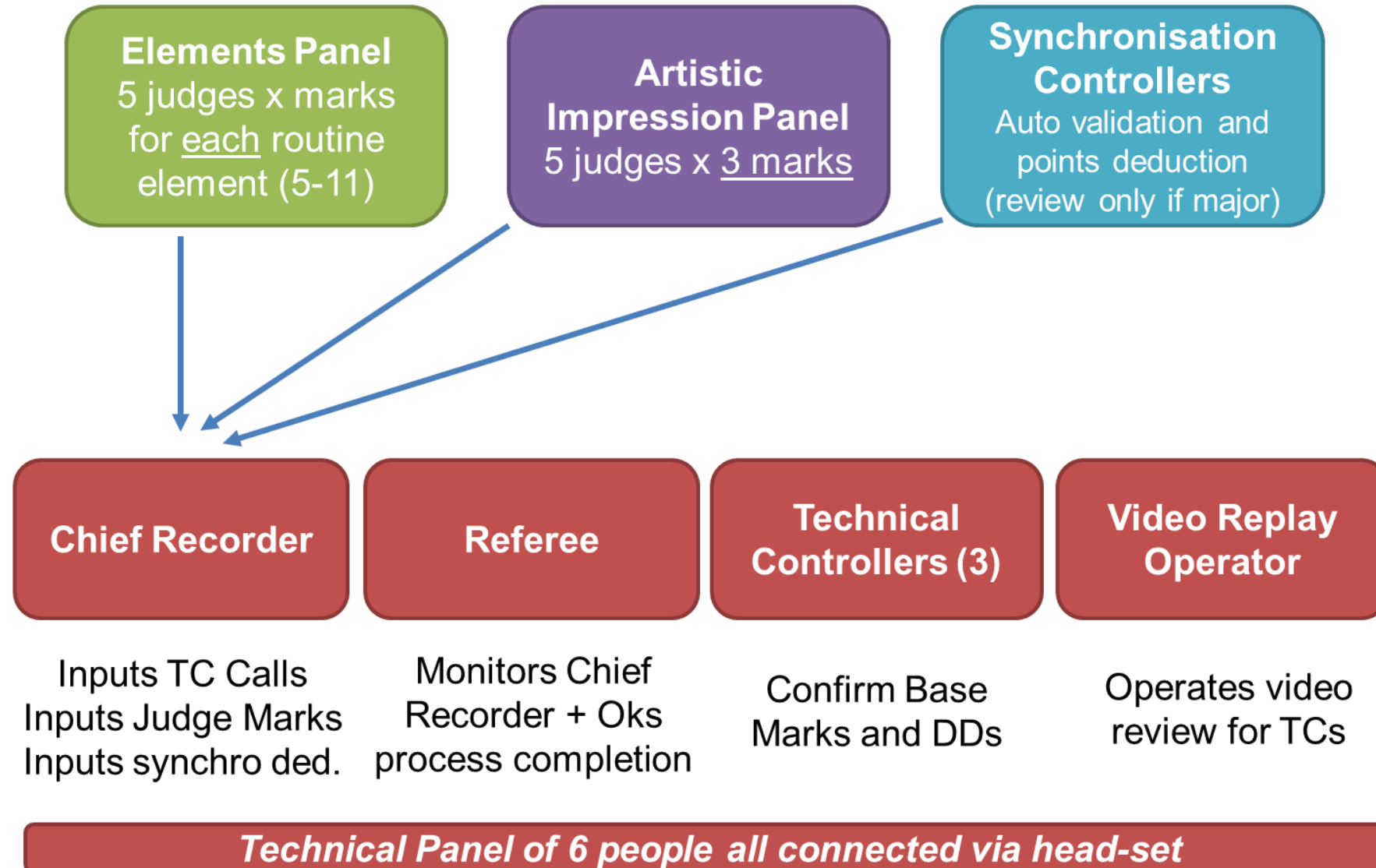
One side of the pool:



Other side of the pool:



OUR NEW COMPETITION FLOW MAY LOOKING SOMETHING LIKE THIS:



CALCULATION EXAMPLE

EVENT: JUNIOR FREE DUET

REQUIREMENTS: 8 HYBRIDS = 8 ELEMENTS (EL)

$EL1DD * Ex + EL2DD * Ex + \dots + EL8DD * Ex = \text{Elements Score (EL Score)}$

**EL score
+ AI score
- Synchro errors
- Other penalties**
Routine Score

Artistic Impression (AI):

Choreography & Music Interpretation = **Ch & Mi score**

Manner of presentation = **Mp score**

Transitions Overall Impression = **Tr score**



SET NUMBERS FOR ROUTINES

Every event will have a set number of elements (hybrids/acrobatics)

Tentative range is from 5 to 11 from 12U to Sr/Jr (subject to approval)

Senior / Junior

Solo Tech, Solo Free, Duet Tech, Duet Free, Mixed Duet Tech, Mixed Duet Free
Team Tech, Team Free, Highlight

Youth (13-15)

Solo, Duet, Mixed Duet, Team, Combo

12U

Solo, Duet, Mixed Duet, Team, Combo



JUDGING SCALES

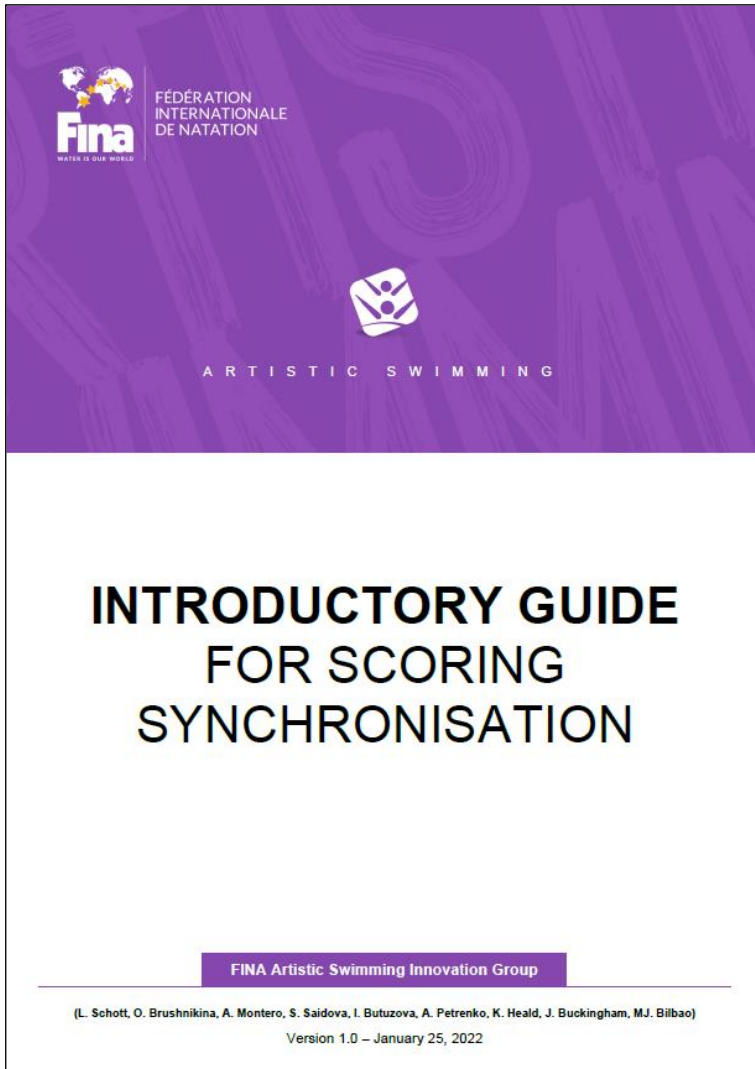
Figures will remain judged in 10ths

Routines will be judged in 0.25 scale . . .

Perfect	10	Satisfactory	5.0 – 5.25 – 5.5 – 5.75
Near Perfect	9.5 – 9.75	Deficient	4.0 – 4.25 – 4.5 – 4.75
Excellent	9.0 – 9.25	Weak	3.0 – 3.25 – 3.5 – 3.75
Very Good	8.0 – 8.25 – 8.5 – 8.75	Very Weak	2.0 – 2.25 – 2.5 – 2.75
Good	7.0 – 7.25 – 7.5 – 7.75	Hardly Recognizable	1.0 – 1.25 – 1.5 – 1.75
Competent	6.0 – 6.25 – 6.5 – 6.75	Completely Failed	0



SYNCHRONISATION GUIDE

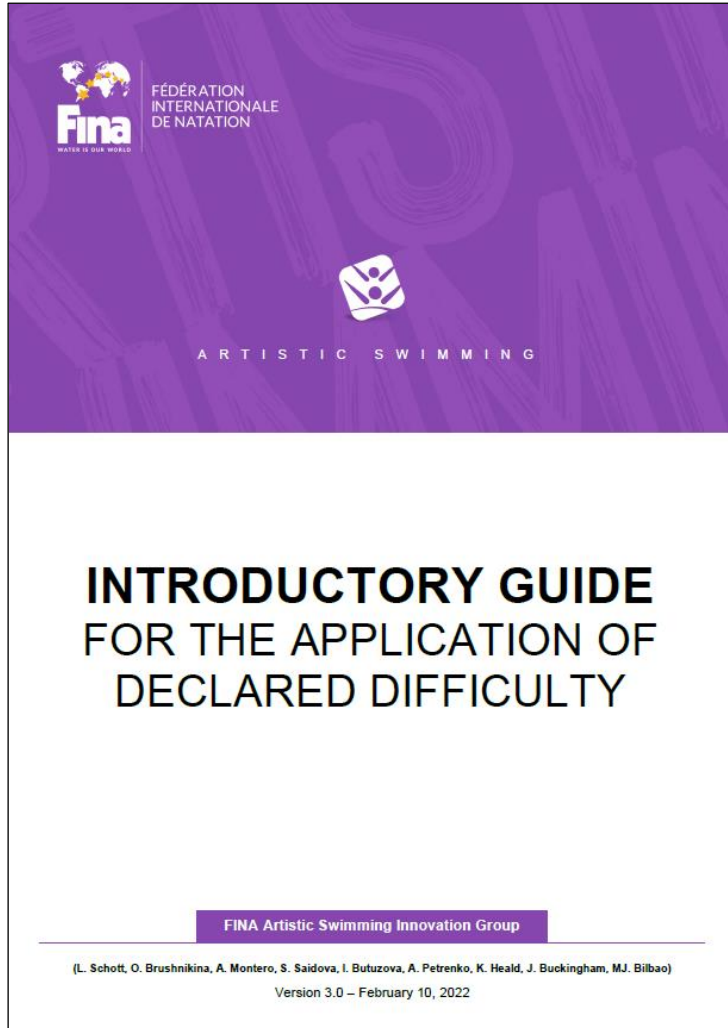


NEW - Introductory Guide to Scoring Synchronisation completed (not posted yet)

- **Once posted all welcome to read but written for Synchro Controllers and Coaches (as well as those involved in scoring process)**
- **Will be introduced at Technical Controller training**
- **Clearly outlines process**
- **Has process and template for “pencil and paper” method**



DIFFICULTY GUIDE





**Introductory Guide – v3 coming soon!
All welcome to read – but written for
controllers and coaches (as well as those
overseeing scoring/coach card process)**

Changes from V.2.:

- **More clarity in definitions, explanations**
- **Difficulty table now 2 pages and easier to read, simplified**
- **Transitions out**
- **Coach card simplified one-page document to start using**



DIFFICULTY TABLE

 FEDERATION INTERNATIONALE DE NATATION  					
HYBRID DIFFICULTY TABLE v. 01.03.2022					
BASE MARK (BM)	Level 1		Level 2	Level 3	Level 4
	No. of Movements (NM):	6 or less movements	7-19 movements	20-29 movements	30+ movements
	Time Underwater (TU):	Short (6 seconds or less)	Medium (7-15 seconds)	Long (16 seconds and longer)	-
HYBRID BONUSES					
Bonuses	Traveling (TR) 1.0m or more	Angles (A) Simple (A-S) or Complex (A-C)	Placement (PL) Hybrid in last 20 seconds	Synchronisation (SY) Partial (SY-P) or Full (SY-F)	Pattern Change (PC) Simple (PC-S) or Complex (PC-C)
Rep/hybrid	Once per hybrid	Once per hybrid	Each in last 20 seconds	SY-P 2x / SY-F 1x **Only for NM 7+ (L2-4)	Every PC counted
FAMILIES					
Levels	Thrusts (T)	Rotations (R)	Flexibility (F)	Airborne Weight (AW)	Connections (C)
Rep/hybrid	L1-4 2x / L5-9 unlimited	L1-4 2x / L5-9 unlimited	2x	2x	2x
Level 1	Thrust with crashing	One or two legs: Swirl 180°-360°	Rapid split by one leg from any position (such as Pike, Tub, Tuck, Inverted Tuck, Bent Knee VP, Fishtail, VP, etc.)	Vertical descent in Bent Knee VP or Fishtail join to VP	Pike Position at the surface of the water
Level 2	Thrust with one leg	One or two legs: Swirl 720°-1080° Spin descending 180° Twist 180° with 1 leg only	Clearly demonstrated split (held at least 1-2 seconds) Walkout Front Back Layout to Surface Arch or Bent Knee Surface Arch	Vertical descent in VP Front Pike to Vertical Position	One leg face-to-face connection
Level 3	Thrust with one leg followed by rotation of Spin 360° Thrust and vertical descent	One or two legs: Swirl 1440° Spin ascending 180°-360° Spin descending 360°-720° Twist or Twirl 180° with 2 legs Twist 360° with 1 leg only	Ariana rotation or split variants at the surface with a demonstration of at least 2 different splits (Right, Left, Middle) Split to Split through VP (changing legs)	Sustained height with one leg or a combination of one and two legs lasting equal or more than 3 seconds Vertical ascent in VP or Bent Knee VP Descending or ascending VP performing isolated movements	One leg back connection
Level 4	Thrust with one leg followed by rotation of Spin 720° or Twirl 180° Thrust with flexibility	One or two legs: Spin ascending 720°-1080° Spin descending 1080°-1440° Twist 360° with 2 legs	Front Layout to Surface Bent Knee Arch Position or a Split From Surface Arch Position to Knight or Split	Isolated movements performed in stable Fishtail Position and piked body position (legs over surface, 30-60° from vertical) lasting equal or more than 3 seconds. Any knee/leg movements performed credited in n° of movements	Two-legs connection

Levels	Thrusts (T)	Rotations (R)	Flexibility (F)	Airborne Weight (AW)	Connections (C)
Level 5	Thrust followed by rotation of Spin 360° or Twirl 180°	One or two legs: Twist 720° with 1 leg Spin ascending 1440° with 1 leg Spin descending more than 1440° with 2 legs Twist opening 360° VP to Split Twirl 360° with 2 legs Combined Spin 360°-720° with 1 leg Reverse Combined Spin 360°-720° with 1 leg	Knights: combinations of Knight positions Knight to Fishtail (through VP) Knight to VP Sustained Knight Position	Sustained height in VP lasting equal or more than 3 seconds	Rotation vertical connection with one leg
Level 6	Thrust with flexibility followed by rotation of Spin 360°	One or two legs: Combined Spin 360° with 2 legs Reverse Combined Spin 360° with 2 legs Two-Direction Combined or Reverse Combined Spin 360°-720° with 1 leg Spin ascending 1440° with 2 legs Twist 720° with two legs Twist Closing 360° from Split to VP	Surface Arch to VP	Sustained height shown at least 3 seconds in VP performed in an unbalanced position. Any knee/leg movements performed credited in n° of movements	Rotation vertical connection with two legs
Level 7	Thrust with rotation of Spin 720° and over	Two legs only: Combined Spin 720° Reverse Combined Spin 720° Two-Direction Combined or Reverse Combined Spin 360° Twist 1080° Unbalanced 360° Twist Two-Direction Twist 360°			
Level 8	Thrust with flexibility followed by rotation of Spin 720° and over	Two legs only: Combined Spin 1080° Reverse Combined Spin 1080° Two-Direction Combined or Reverse Combined Spin 720° Twist 1440° Unbalanced 720° Twist Two-Direction Twist 720°			
Level 9	Thrust continued by catching a sustained Vertical Position	Two legs only: Combined Spin 1440° Reverse Combined Spin 1440° Two-Direction Combined or Reverse Combined Spin 1080° Unbalanced 1080° Twist			

Example of new layout (2 full easier to read pages)



ACROBATICS DIFFICULTY



“CLASSIFICATION AND DEGREES OF DIFFICULTY OF ACROBATIC MOVEMENTS IN ARTISTIC SWIMMING”

2017 – 2021

FINA Artistic Swimming Innovation Group

(L. Schott, O. Brushnikina, A. Montero, S. Saldova, I. Butuzova, A. Petrenko, K. Heald, J. Buckingham, M.J. Bilbao)

No changes – continue to familiarize yourself with Acro catalogue. Declaring Acro will be on Coach Card (one “universal” card)

Detailed acrobatic catalog of:

- Classification of acrobatic movements**
- Acrobatic groups and subgroups**
- Components and special elements**
- Values and algorithm for calculating DD**
- Tables, catalogue & code system**



EDUCATION & TESTING

- **Continued focus for new areas is on getting more familiar and more comfortable with identifying difficulty of Hybrids & Acrobatics**
- **FINA engaging officials and coaches in education, training, webinars, testing and feedback**
- **FINA will test new judging system (or parts of) at 2022 competitions**
- **Continue to test validity and reliability of system using proven scientific methods**
- **Experts are being engaged to review the mathematics**



CAS - NEW SYSTEM EDUCATION PLAN

Technical Controllers	Judges	Coaches
<p>New system overview/new rules</p> <p>Check and verify the declared difficulty of Hybrids and Acrobatics (as declared on Coach Card)</p> <p>Identify synchronisation errors</p> <p>FINA led controller training</p> <p>Those FINA trained will then train domestic</p> <p>As this is new, process is in development</p>	<p>New system overview/new rules</p> <p>New Hybrid Execution Marking Scale and New Acrobatic Marking Scale (AS Manual)</p> <p>New AI Marking Scale (AS Manual)</p> <p>Figures and Technical Required Elements update</p> <p>FINA lecturers will train International Officials (certification school) then NOC will train domestic</p>	<p>New system overview/new rules</p> <p>Declared difficulty of Hybrids and Acrobatics</p> <p>How to fill out a Coach Card</p> <p>Understanding new marking scales (AS Manual)</p> <p>Figures and Technical Required Elements update</p> <p>CAS/PTSO led collaboration</p>

DOMESTIC IMPLEMENTATION

- **March 2022**
 - PTSO reps 1st meeting / system update presentation
 - PTSO reps please present update to your provinces
 - FINA Technical Controller Training (Mar 12-26 / 3 Canadians)
 - Share CAS Coach Card
 - Any new judging area/rules info that comes out will be shared
- **April 2022**
 - PTSO reps 2nd meeting / update – April 12th
 - CAS to start to identify pool of domestic technical controllers to be trained by those who were FINA trained
 - Goal to have coaches volunteer to try Coach Card for nationals and try some new system areas at Nationals in May



DOMESTIC IMPLEMENTATION

- **May 2022**

- PTSO reps 3rd meeting / Date TBD
- National Championships May 8-15 – try some new system areas TBD (judging/coach card/tech controllers)
- Info sessions at Nationals on new system
- Work on domestic controller training

- **June 2022**

- PTSO reps 4th meeting / update
- Other action items TBD based on new info from FINA and feedback from PTSOs
- Continue work on domestic controller training



QUESTIONS?



Updates

- Revised Material
 - Difficulty guide updated
 - New synchronization guide
- FINA Technical Controller training delayed
 - Call for applications to come from CAS

FINA Learning Platform

- FINA Learning Platform – [CLICK HERE](#)
- Link to Resource Documents
 - Difficulty Introduction Guide – [CLICK HERE](#)
 - Classification and Degrees of Difficulty of Acrobatic Movements – [CLICK HERE](#)
 - Introductory Guide for Scoring Synchronization – [CLICK HERE](#)

Where are we now?

- Awaiting FINA Rule Revisions
- New electronic testing continues at FINA
 - We will need to purchase new equipment in BC once we know what it is we need
- Fall Development Camps / Technical Conference
 - CAS to Relay more info on New System



Where are we now?

2022-2023 Season Plan

National Stream

- Align with CAS – ongoing education
- CAS: Shadow Panels and possible new system roll out at Nationals (pending FINA and Omega (electronics)).
- BC: Potential shadow panels; NO full system implementation



BC

Provincial Stream

- No new system in 2022-2023
- Potential shadow panels at Mable Moran or Jean Peters
- Ongoing education

Q&A

