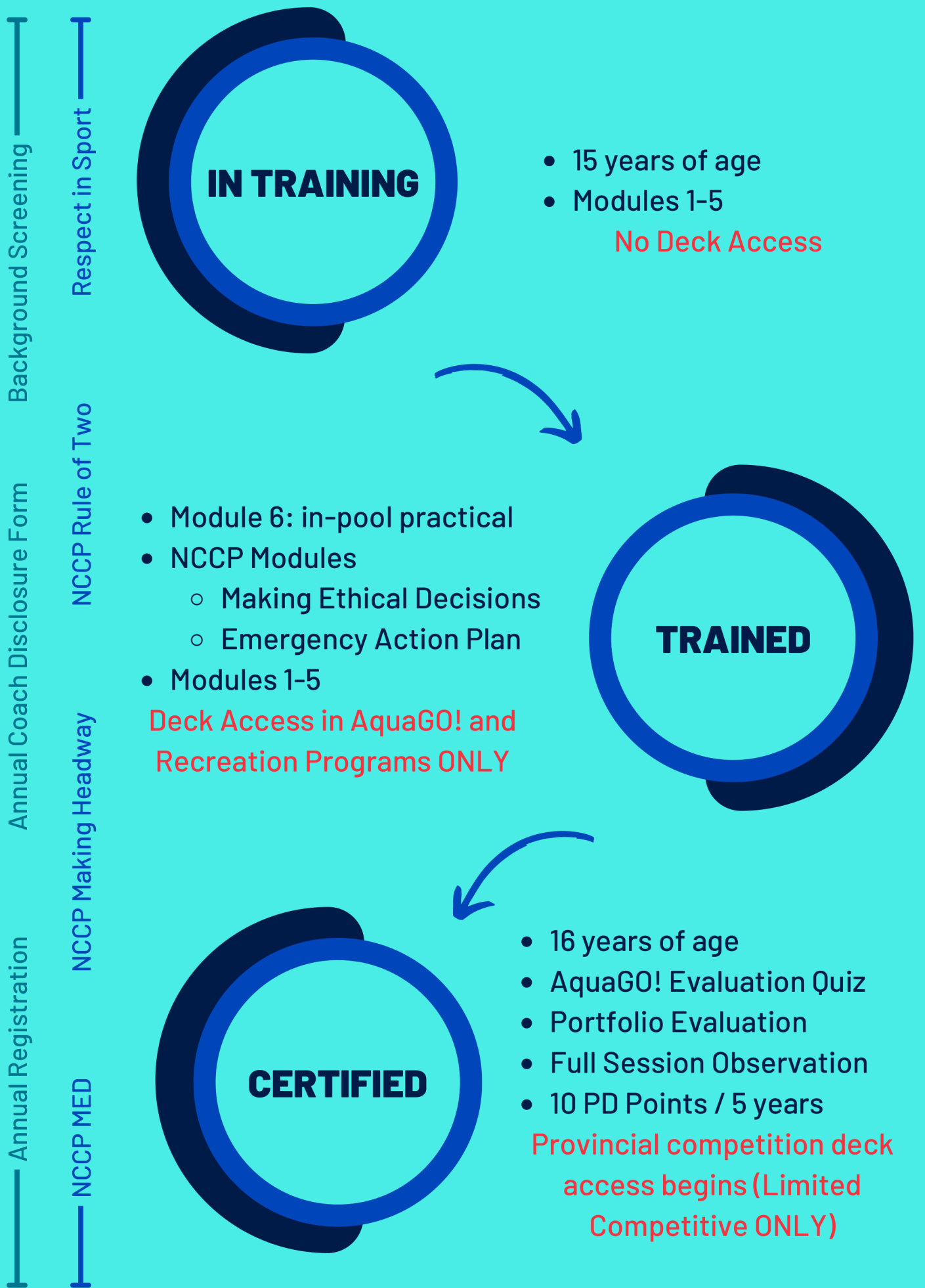


# Coach Development Pathway

- COACH IN-TRAINING** A coach who has completed some of the required training for a context as defined by the CAC.
- TRAINED COACH** A coach who has completed all the required training for a context as defined by the CAC.
- CERTIFIED** A coach who has completed all the evaluation requirements for a context as defined by the CAC.
- ADVANCED COACH DIPLOMA** A coach who has completed a one-year ACD diploma as defined by the CAC.



Coaches are not allowed to coach above their level of certification. Exemptions may be granted one-time (lifetime) on a case-by-case basis.